

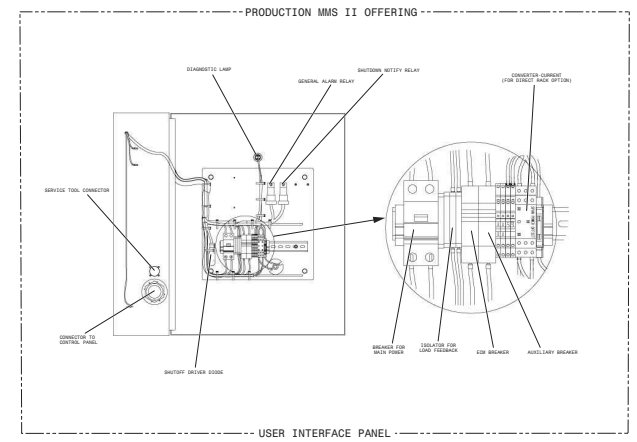
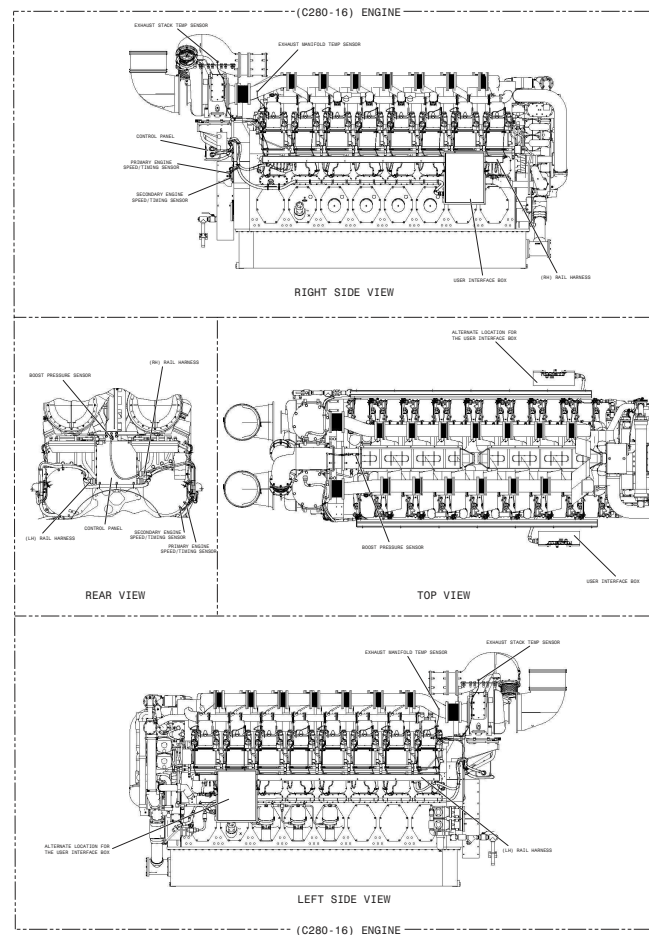
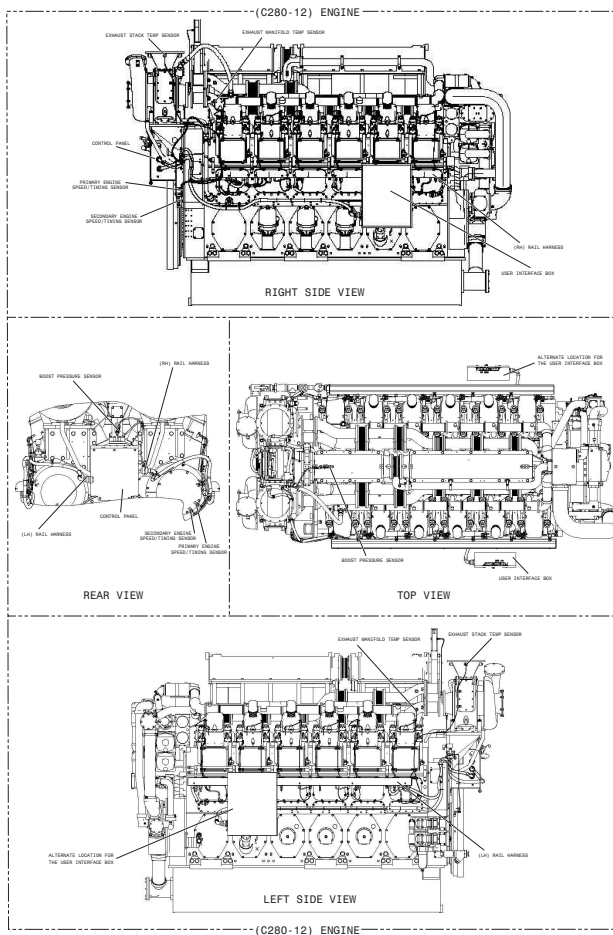
Schematic

C280-12 and C280-16 Marine Auxiliary Engine Electrical System

NKB1-UP
TSJ1-UP
RDW1-UP
TDX1-UP

© 2007 Caterpillar, All Rights Reserved

Printed in U.S.A.



Failure Mode Identifier (FMI)	
FMI No.	Failure Description
0	Bank switch had above normal operational range
1	Bank switch had below normal operational range
2	Bank switch had above normal range
3	Voltage above normal or shorted high
4	Voltage, with or without, above normal
5	Current above normal or excessive loss
6	Current below normal or excessive loss
7	Current above normal or grounded circuit
8	Current below normal or excessive loss
9	Abnormal resistance or impedance of circuit
10	Abnormal inductance
11	Abnormal capacitance
12	Failure mode not identifiable
13	Bad diode or component
14	Out of calibration
15	Parameter failure
16	Parameter failure
17	Parameter failure
18	Parameter failure
19	Parameter failure
20	Parameter failure

Event Codes	
Event Code	Condition
8024	Engine Overload Shutdown
8043	Low System Voltage Warning
8180	Engine Overload Warning
8024	Engine Overload Shutdown

Component Identifiers (CID)	
Engine Monitoring System	
CID	Component
0001	Injection Cylinder #1
0002	Injection Cylinder #2
0003	Injection Cylinder #3
0004	Injection Cylinder #4
0005	Injection Cylinder #5
0006	Injection Cylinder #6
0007	Injection Cylinder #7
0008	Injection Cylinder #8
0009	Injection Cylinder #9
0010	Injection Cylinder #10
0011	Injection Cylinder #11
0012	Injection Cylinder #12
0013	Injection Cylinder #13
0014	Injection Cylinder #14
0015	Injection Cylinder #15
0016	Injection Cylinder #16
0017	Injection Cylinder #17
0018	Injection Cylinder #18
0019	Injection Cylinder #19
0020	Injection Cylinder #20
0021	Throttle Position Sensor
0022	Throttle Position Voltage
0023	Throttle Sensor Module
0024	Pressure Mode
0025	1-100 Scale Power Sensor
0026	1-100 Scale Power Sensor
0027	Engine/Generator Parameter Pack
0028	Engine/Generator Output Parameter Pack
0029	Engine/Generator Parameter Sensor
0030	Engine/Generator Sensor Parameter
0031	Injection Cylinder Sensor Parameter
0032	Injection Cylinder Sensor Parameter

